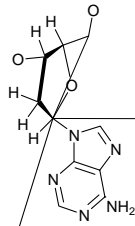
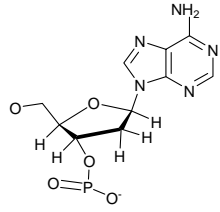


amc technical briefs

Editor: Michael Thompson An

food authenticity analysis. Although these methods are often classed as being in the real world

plant, micro-organism and animal cell and carries genetic information from one generation to the next. Segments of DNA that carry genetic information are called 'genes'. Genes determine the nature of the cell, control cell growth and division, and direct the biosynthesis of enzymes and other proteins required for cellular function. In cells DNA is organised into,172619 214.82043 33m(DNA is orga 168.27206 34649970.001DNA is organis19 148.6m)Tjc5 211.45094 32nd o



NO NH